

CANTON DE VAUD

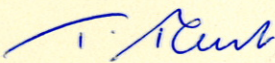
COMMUNE DE LULLY

PLAN DE QUARTIER "SECHERON"

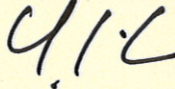
ECH. 1:500

APPROUVE PAR LA MUNICIPALITE DANS SA SEANCE DU **20 MAI 1996**

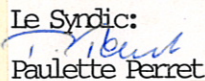
LE SYNDIC



LE SECRETAIRE



Modification du périmètre d'implantation
Approuvé par la Municipalité
dans sa séance du 9 février 1998

Le Syndic:

Paulette Perret

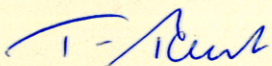


La Secrétaire:

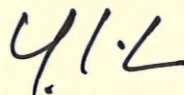
Y. Livet

SOU MIS A L' ENQUETE PUBLIQUE DU **28 MAI 1996** AU **10 JUIN 1996**

LE SYNDIC

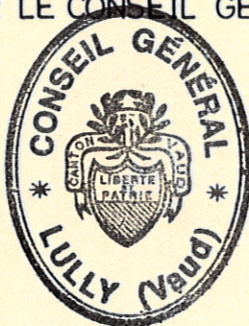
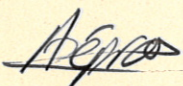


LE SECRETAIRE

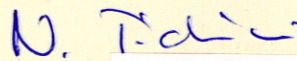


ADOpte PAR LE CONSEIL GENERAL DANS SA SEANCE DU **10 DEC. 1996**

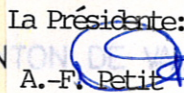
LE PRESIDENT



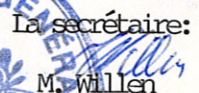
LE SECRETAIRE



Modification du périmètre d'implantation
Approuvé par le Conseil général
dans sa séance du 30 juin 1998

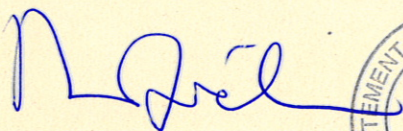
La Présidente:

A.-F. Petit



La secrétaire:

M. Willen

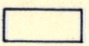
Approuvé par le Département des
Infrastructures, le

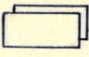
20 OCT. 1998

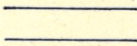



- · — PERIMETRE DU PLAN
- ⌈ — — — — — ⌋ PERIMETRE D'IMPLANTATION
- ⌈ — — — — — ⌋ PERIMETRE D'IMPLANTATION MODIFIE LE 23 JUIN 1997
- ORIENTATION DU FAITE PRINCIPAL

 BATIMENT EXISTANT


 SURFACE BATIE MAXIMUM


 SURFACE PLANCHERS MAXIMUM

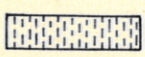
 VOIES DE CIRCULATION

 ACCES VEHICULES

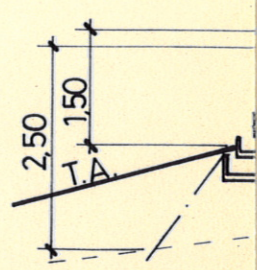
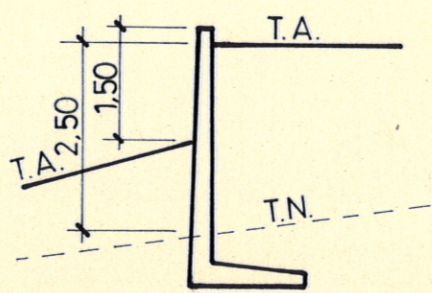
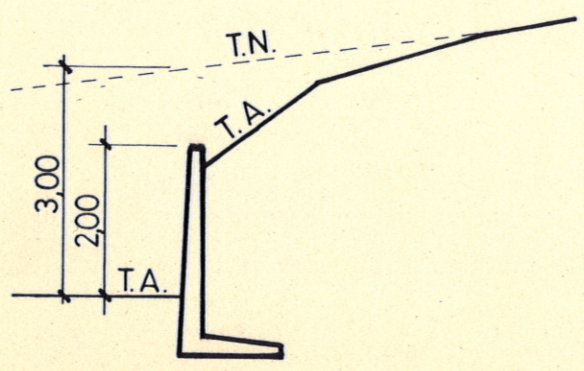
P PARKING EXTERIEUR

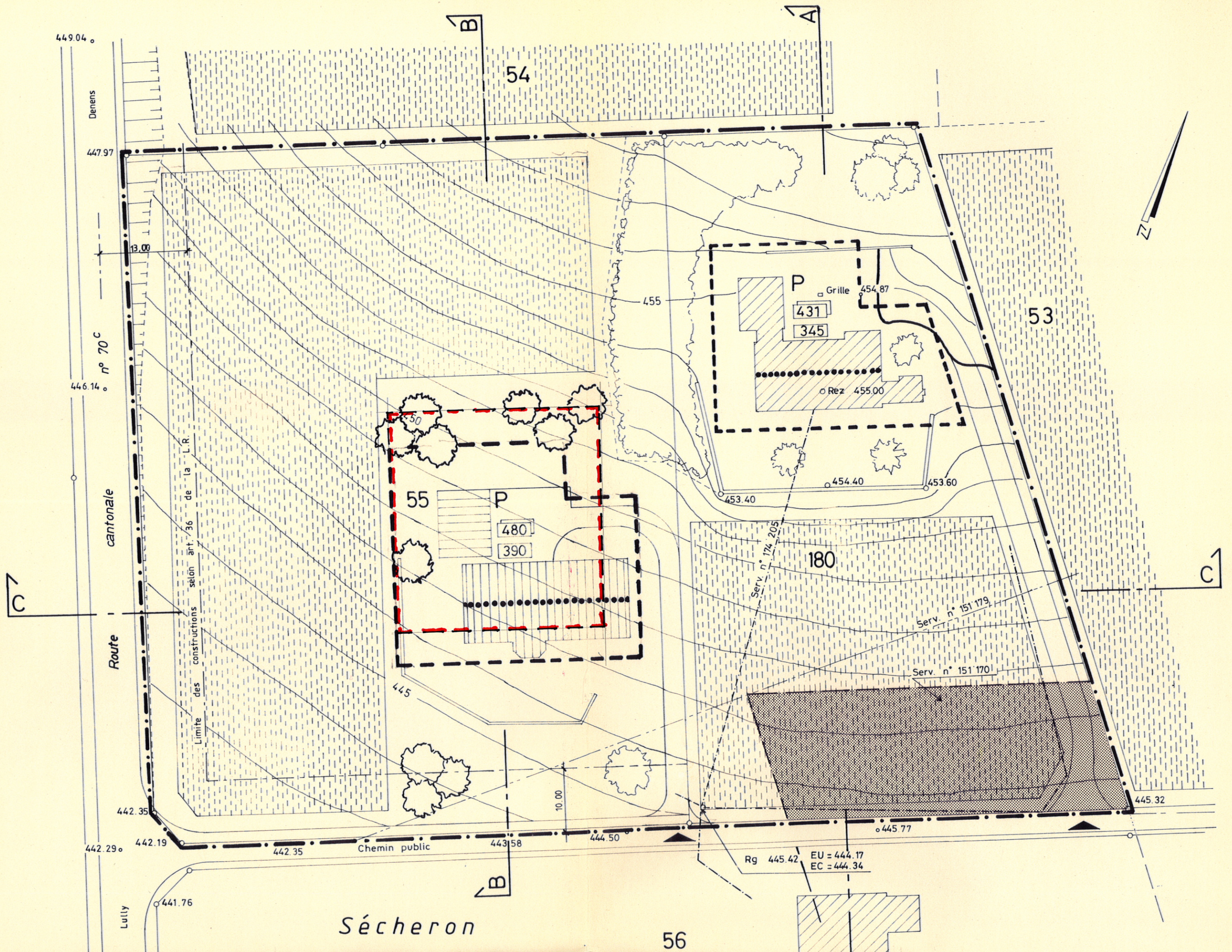
 ARBORISATION EXISTANTE

 ARBORISATION A CREER

 AIRE VITICOLE OU AGRICOLE

SCHEMAS ARTICLE 11.





COORDONNEES MOYENNES 151.370/525.130

LISTE DES PROPRIETAIRES:

55 : SUCCESSION DE M^{me} AUDREY HEPBURN

180 : M^{lle} VICTORIA BRYNNER

