

COMMUNE DE LULLY

PLAN DE QUARTIER "EN BILLENS "

ECH: 1/500

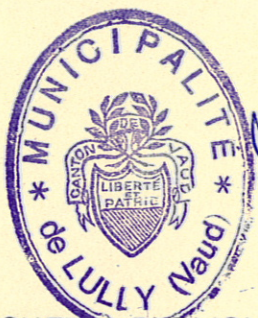
MODIFICATIONS APPORTEES SUITE AUX OPPOSITIONS
ET SOUMISES A L'ENQUETE COMPLEMENTAIRE

APPROUVE PAR LA MUNICIPALITE DANS SA SEANCE DU 08 FEV. 1993

LE SYNDIC

LE SECRETAIRE

[Signature]



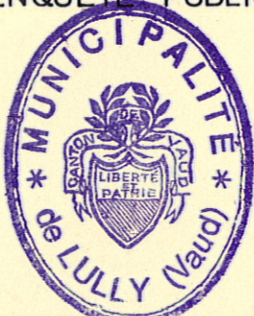
[Signature]

SOU MIS A L'ENQUETE PUBLIQUE DU 11 MAI 1993 AU 11 JUIN 1993

LE SYNDIC

LE SECRETAIRE

[Signature]



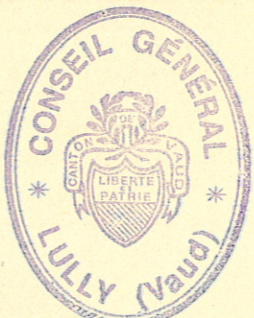
[Signature]

ADOpte PAR LE CONSEIL GENERAL DANS SA SEANCE DU 29 JUIN 1993

LE PRESIDENT

LE SECRETAIRE

[Signature]



[Signature]

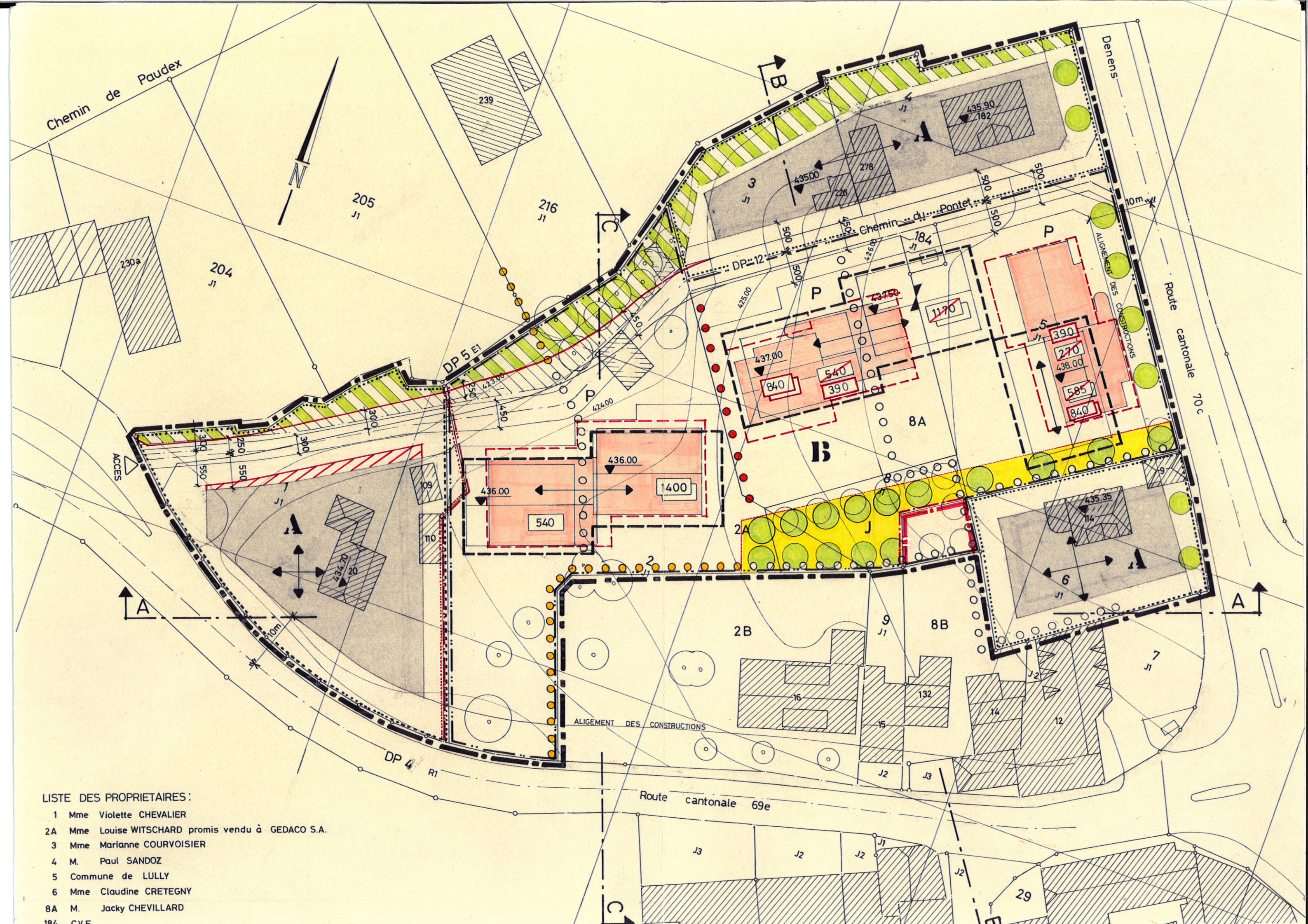
APPROUVE PAR LE CONSEIL D'ETAT DU CANTON DE VAUD LE 29 JUIN 1994

L'ATTESTE LE CHANCELIER



[Signature]

31.3.1992



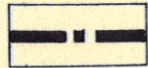
LISTE DES PROPRIETAIRES :

- 1 Mme Violette CHEVALIER
- 2A Mme Louise WITSCHARD promis vendu à GEDACO S.A.
- 3 Mme Marianne COURVOISIER
- 4 M. Paul SANDOZ
- 5 Commune de LULLY
- 6 Mme Claudine CRETEGNY
- 8A M. Jacky CHEVILLARD
- 184 C.V.F.

LEGENDE



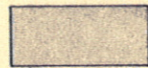
MODIFICATIONS SOUMISES A L'ENQUETE COMPLEMENTAIRE



PERIMETRE DE P.Q. " EN BILLENS "



AIRE D'HABITATION A MOYENNE DENSITE



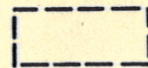
AIRE D'IMPLANTATION DES CONSTRUCTIONS (CUS0,4)



ACCES VEHICULES FUTUR



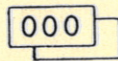
AIRE D'HABITATION VILLAGEOISE



PERIMETRE D'IMPLANTATION DES CONSTRUCTIONS



SURFACE MAXIMUM BATIE AU SOL m²

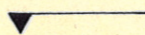


SURFACE MAXIMUM DE PLANCHERS BRUTS m²

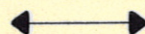


CONTIGUITE OBLIGATOIRE

DISPOSITIONS GENERALES



ALTITUDE MAXIMUM AU FAITE



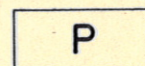
ORIENTATION DES FAITES OBLIGATOIRES



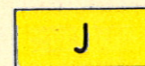
AIRE DE PROTECTION DE LA VEGETATION



CHEMINEMENTS PIETONS



PARKING EXTERIEUR



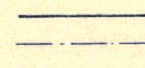
PLACE DE JEUX, PLACE PIETONNE ARBORISEE



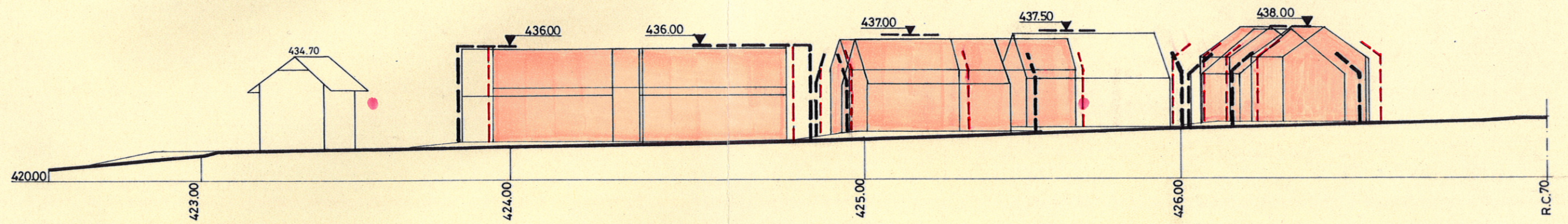
ARBORISATION



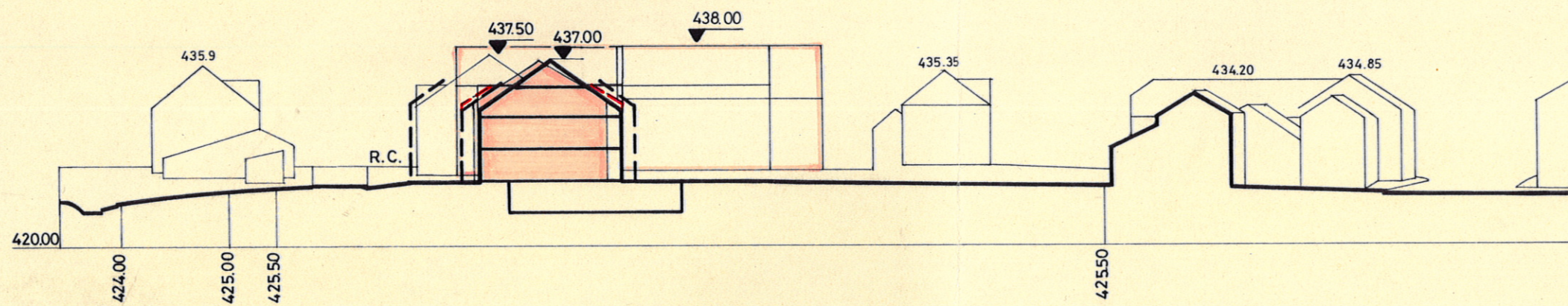
ALIGNEMENT NOUVEAU DES CONSTRUCTIONS



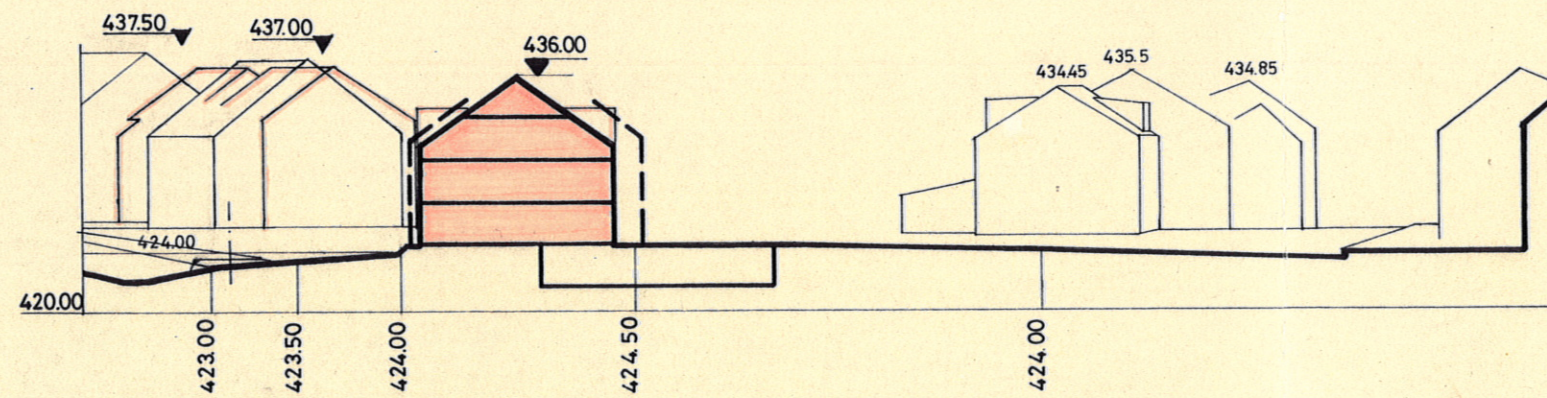
LIMITE DE VOIRE



COUPE A-A



COUPE B-B



COUPE C-C